

## Dealing with parked cars

Sometimes there is not enough room on a road for two vehicles to pass safely at their normal speed - perhaps because of parked cars or roadworks. In these situations you may meet vehicles coming the other way and should follow certain procedures.



### Who has priority?

Normally, if the obstruction is on your side then you should give way. Sometimes you will be able avoid coming to a complete stop if you approach slowly enough to allow oncoming vehicles to pass the obstacle before you get there. On other occasions there might be room for you to pass safely at the same time as other vehicles but slow right down first: 'less space = less speed'. Sometimes you may find it hard to decide whether it's safe to continue or not. Don't worry, that's normal! If you don't know, don't go!



### Holdback position

If you stop, position well back so it's easy to pull off again & away from the kerb so you have a good view & don't look like a parked car.



### Moving off safely

After giving way, make sure you check all your mirrors, the road ahead and your right blind-spot before pulling off. Consider a right signal if you feel it would be helpful to other road users.



### Flashing headlights

If other drivers flash their headlights at you, make sure they are giving way before you proceed. Officially, you should only flash headlights to alert others to your presence.

Pass your test with:

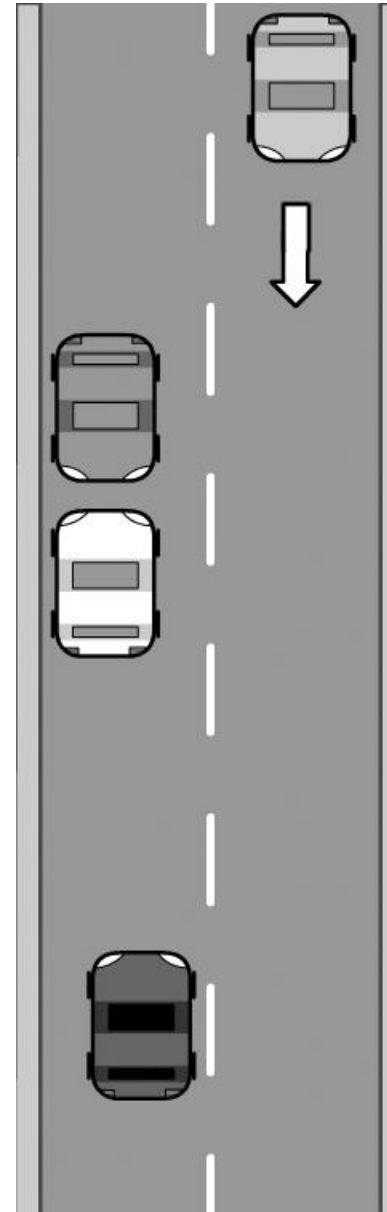
**Wycombe Driving School**

**01494 718888**

[www.wycombedrivingschool.co.uk](http://www.wycombedrivingschool.co.uk)



## Meeting vehicles



The holdback position

### The Approach

- Decide who has priority
- Use the MSPSL routine on approach
- Try to time approach so nobody stops
- Wait, go or don't know?

### Squeezing through

- If you decide to pass an obstacle at the same time as oncoming cars, proceed slowly
- Ideally keep a metre away from obstacles.

### Waiting

- Stop in the 'holdback position'
- Keep monitoring the traffic around you
- Look for a safe gap & consider a signal

### Moving off

- Use the POM routine, paying particular attention to blind-spots

### Planning

- Adjust your speed to match the risk - the less you can see, the slower you go
- Identify gaps you can pull into as you go along, before oncoming traffic arrives
- Check mirrors frequently - are cars queuing behind you and blocking the road?
- When you have priority, don't expect oncoming cars to stop - identify the gaps they should pull into and check they are slowing down.
- Thank drivers who give way to you
- Think how parked cars on bends and near junctions will knock others out of position
- Look for reflections of oncoming cars in the sides of parked cars on bends
- Imagine big and fast vehicles are coming from the places you can't see
- Eliminate as many blind-spots as possible - look down pavements & through car windows