

Parallel reverse parking

✓ Being able to reverse into a space between two cars at the edge of the road is a very useful skill. It could mean that you can park right outside a shop, instead of having to walk there from a car park. By reversing, you can fit into a much smaller space than you would need to drive in forwards - but don't try to reverse into a space less than 1.5 car lengths as this could prove embarrassing!

✓ **Warn and watch**
When you find a space you should get into position and put the reverse lights on quickly so any vehicles that come up behind you realise what you are doing and don't queue across the gap. Keep checking around for traffic as you complete the manoeuvre. Any waiting cars are unlikely to stay put until you have completely finished - they tend to drive on as soon as you are far enough out of their way. Make sure you are stationary while others pass by.



✓ **Park neatly**
If you were passing a string of parked cars and one of them had been left with its front wheels sticking out, would you think that the car was about to pull out? Would you slow down just in case? If you don't want to create this sort of doubt, make sure that when you finish parking at the side of the road your front wheels are pointing straight ahead.

Pass your test with:

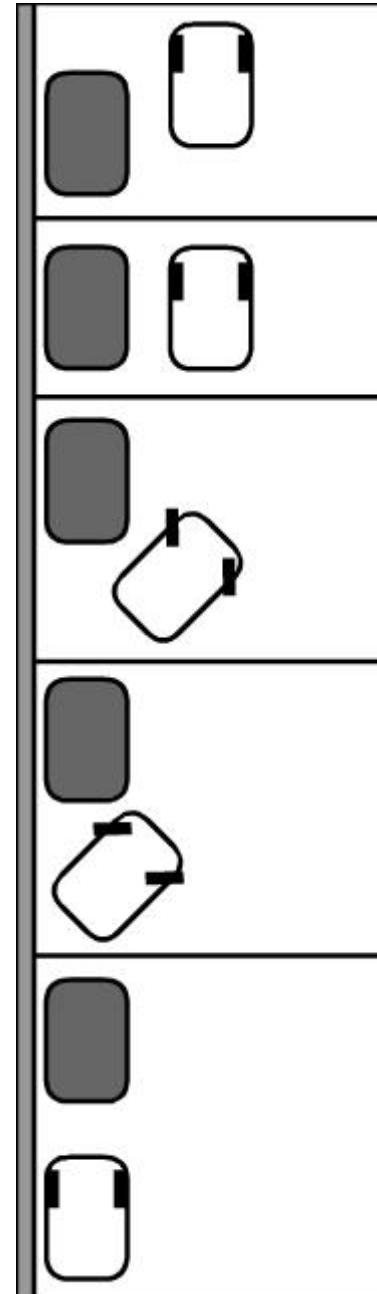
Wycombe Driving School

01494 718888

www.wycombedrivingschool.co.uk



Parallel reverse parking



How to do it

1. Starting position

Drive alongside the target vehicle, no more than 1m from it and parallel with it. Stop when you are nearly halfway past it, select reverse, & pull up the handbrake if needed.

2. Get in line

Check all around the car, then reverse until the back ends of both vehicles are in line.

3. Steer left

Check your right blind spot then steer left. Your instructor will help you work out how much to steer and when.

4. Steer right

When the rear wheel is near the kerb, steer right to swing in the front of the car. Your instructor will help you judge how much to steer and when.

5. Steer straight

When the car is virtually straight, steer left to tuck in the front wheels. Make sure you finish far enough back to pull away easily, but with no more than one car length of space between you and the target car. Throughout the manoeuvre, look around for traffic & to check your position.

If it starts to go wrong...

If it looks like you are going to hit the kerb then steer more, to full right lock, and this may fix it. If not, simply pull forward in a straight line and then continue from there. If you are drifting too far from the kerb, steer left again until you are closer and then carry on from there.