

Turn-in-the-Road

Sometimes you may need to manoeuvre your car in a tight spot by shunting forwards and backwards. On your driving test you may be asked to turn the car around in a road so it is facing the other way. This allows the examiner to check that you can drive the car slowly using clutch-control at the same time as steering and looking out for other road users.



Three-point turn: The turn-in-the-road used to be known as the three-point turn. However, it's not always necessary to complete the manoeuvre in three legs. Your examiner will just expect you to turn the car around in as few moves as possible, bearing in mind the length of your car and the width of the road. An easy way to gauge what is expected is to picture three cars side by side across the road. If you can fit three in, you should be able to complete the job in three moves in a small car.



Assess the road: Choose a safe place to turn around - ie not near junctions or where there are obstacles near the edge of the pavement. Before you start, check how the road slopes so you are prepared for how this will affect your speed. (see info on 'camber' overleaf).



Look out and keep calm: Keep a constant look out for other road users and stop when they get close to you in order to give way. Even if there isn't room for them to squeeze through, they might mount the pavement to pass you! Continue once you are happy all is safe. Don't panic if everything starts to go wrong. Most other drivers will find this amusing or endearing, rather than annoying!

Pass your test with:

Wycombe Driving School

01494 718888

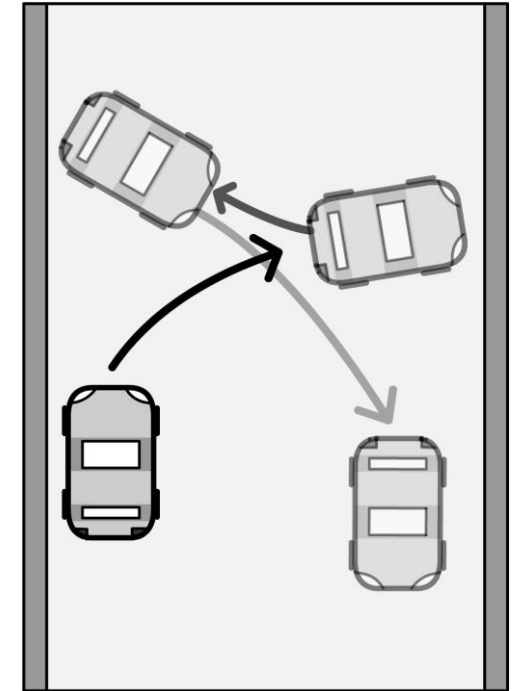
www.wycombedrivingschool.co.uk



Turn-in-the-Road

How to do it

1. POM routine, then move off very slowly using clutch control and steer very quickly to full right lock. Speed up a little as you cross the road.
2. Just before reaching the other side, ideally steer the other way to straighten the wheels and then stop. Pull up the handbrake if necessary.
3. POM routine, then look through the back window and reverse, steering quickly to full left lock. Look through the driver's side rear side window as you near the kerb. Steer right to straighten the wheels before stopping. Apply the handbrake if necc.
4. POM routine, then pull off steering to the right as necessary, then straighten up. Check the rear view mirror before accelerating.



Throughout the manoeuvre keep checking for other road users and stop when they get close - that includes pedestrians. Don't forget to thank drivers who have waited for you.



Most roads are built with a slope so rain can drain into the gutters.

Usually, the road is higher in the middle than at the edges but sometimes it's wedge-shaped.

Be ready to adjust your speed accordingly. Quite often the car will speed up as you cross the crown and you'll need to push the clutch down and gently brake to control your speed near the kerb.