

Y-junctions

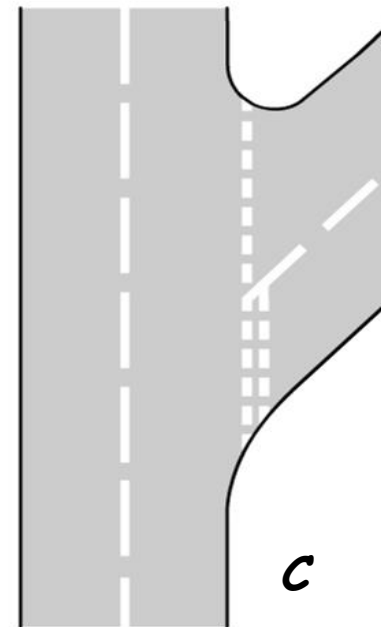
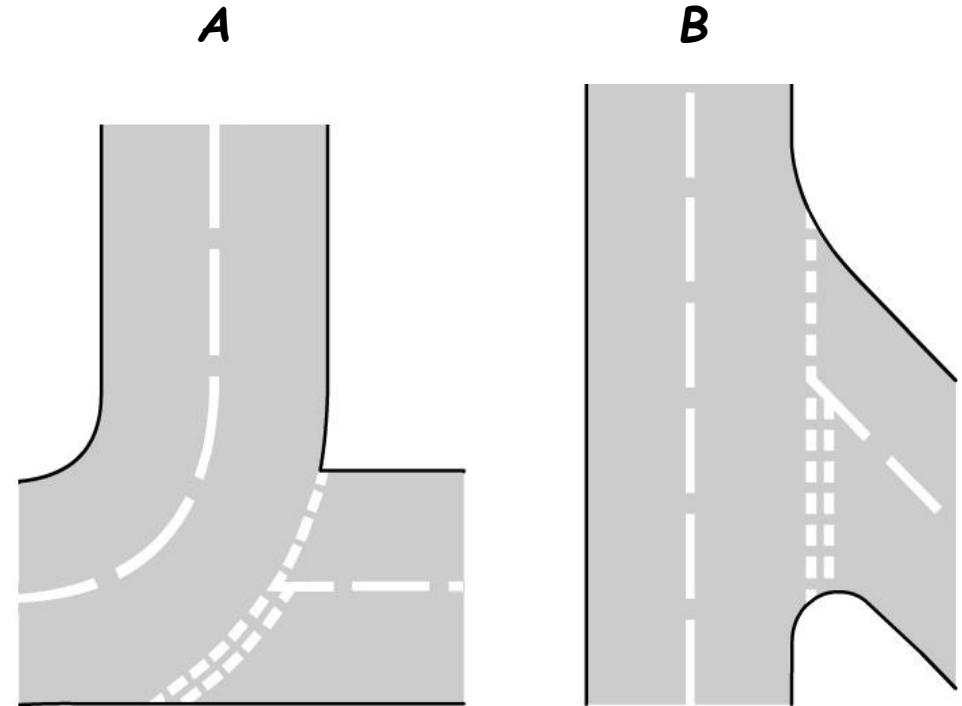
- ✓ Y-junctions get their name due to being shaped like the letter Y. This can cause issues with visibility.
- ✓ A typical Y-junction will have a main road going straight ahead with a joining minor road to the left or right at an acute angle (pics B and C). The angle can create a blind spot behind the A-pillars next to your windscreen. Lean forwards or backwards in your seat as necessary to see past this blind spot.
- ✓ If a Y-junction is on a bend (pic A), the main road may be straight ahead of the joining road. It is easy for joining drivers to fail to see the junction and come shooting out without looking. Or they may see the junction at the last moment and slam their brakes on, surprising traffic behind them.
- ✓ Be aware that other road users may not signal correctly at Y-junctions because it may not occur to them, due to the fact that they are not making full right angle turns.
- ✓ Some Y-junctions will have two entrances/exits (pic D). They are designed to reduce the angle of your turn. From whichever direction you are approaching, take the first available entrance/exit linking to your destination road.
- ✓ The normal MSPSL routine applies at Y-junctions but be aware that it is more likely others will make a mistake.

Pass your test with:

Wycombe Driving School

01494 718888

www.wycombedrivingschool.co.uk



Y-junctions come in many forms

